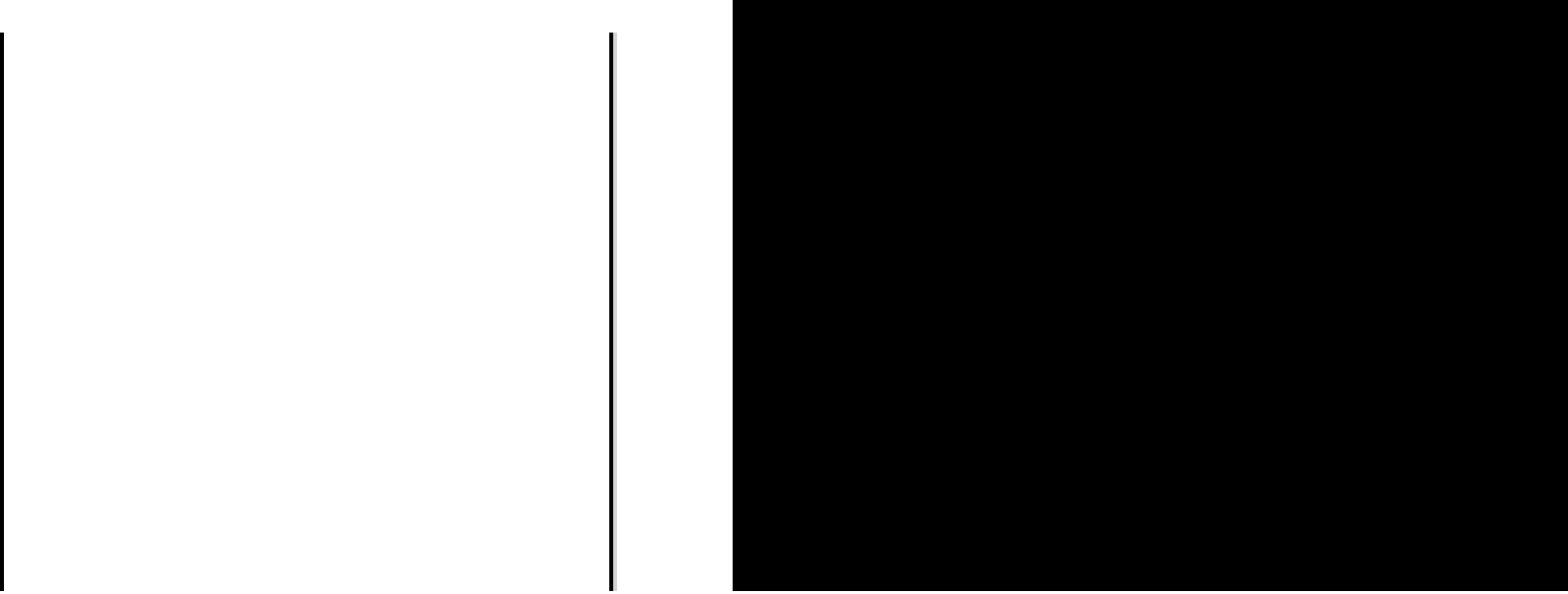
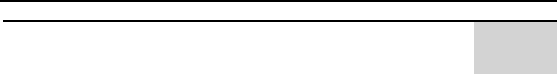


.....	1
.....	5
.....	8
.....	13





			300558
		Betta Pharmaceuticals Co.,Ltd	
			589
			311100
			355
			311100
		www.bettapharma.com	
		beta0107@bettapharma.com	

		355
	0571-89265665	0571-89265665
	0571-89265665	0571-89265665
	beta0107@bettapharma.com	beta0107@bettapharma.com

	www.cninfo.com.cn
	355

--	--

	61

	2 27 28	1	2016.11.07-2019.12.31

	2016	2015		2014
	1,035,060,899.76	914,663,873.40	13.16%	704,435,260.83
	368,795,897.61	345,298,066.85	6.81%	269,286,149.83
	304,953,247.12	306,515,212.54	-0.51%	251,532,870.10
	407,053,018.92	385,563,833.06	5.57%	277,553,769.10
/	1.01	0.96	5.21%	0.75
/	1.01	0.96	5.21%	0.75
	32.88%	48.72%	-15.84%	62.66%
	2016	2015		2014
	2,167,302,956.39	1,147,044,874.94	88.95%	662,928,292.13
	1,924,331,000.45	888,316,040.37	116.63%	535,282,058.16

	274,926,779.02	243,649,095.96	268,783,830.42	247,701,194.36
	103,238,738.46	109,128,524.07	95,984,995.87	60,443,639.21
	75,499,192.22	90,399,246.35	85,450,276.53	53,604,532.02
	122,108,537.54	93,979,362.19	107,915,518.47	83,049,600.72

1

2

	2016	2015	2014	
	4,085,498.25	-35,006.06	-184,838.13	
	2,197,732.83	1,543,131.51	1,351,083.52	
	59,044,942.45	41,387,250.46	17,825,543.57	
	11,904,794.03	6,459,996.08	4,757,292.84	
	-2,009,458.24	-1,373,942.21	-509,799.27	
		-1,727,524.80	-1,727,524.80	
	11,379,700.64	7,451,050.67	3,571,728.00	
	1,158.19	20,000.00	186,750.00	
	63,842,650.49	38,782,854.31	17,753,279.73	--

1 —

1

2011

1

“ ”

1

EGFR

NSCLC

NSCLC

2016

“

” 12

“

”

2

1

GMP

2

GMP

GMP

2010

GMP

ISO14000 ISO18000

3

3

“ ”

2025

QuintilesIMS

2016

2017-2020

2016
2016

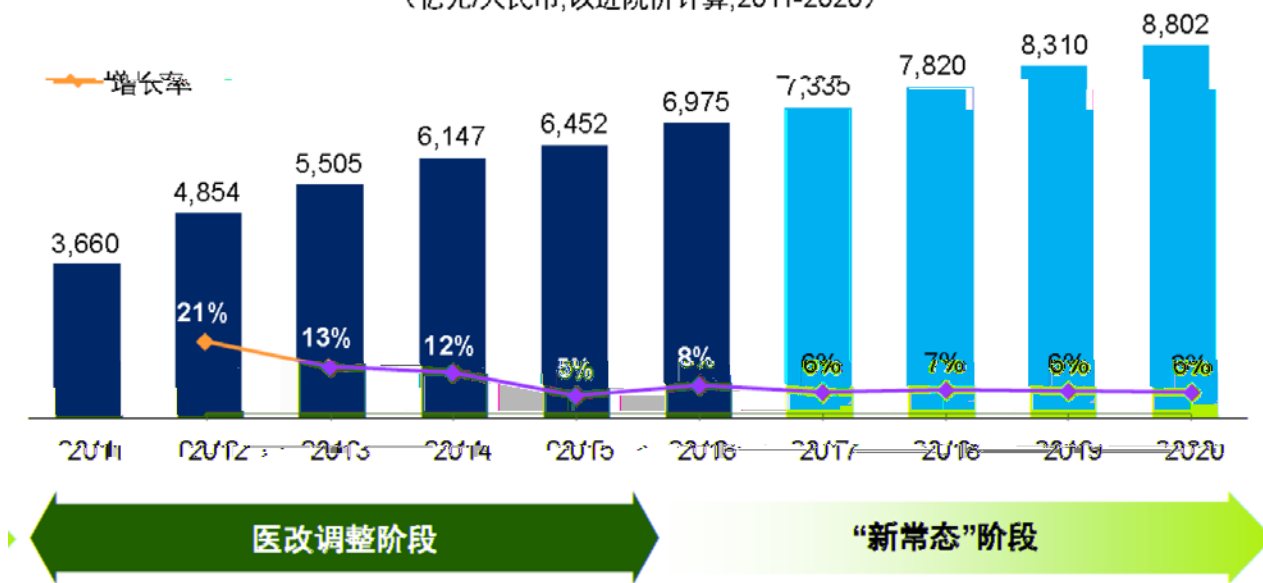
6975

8%
10%

15%

中国医药药品市场历史表现及未来趋势

(亿元/人民币,以进院价计算,2011-2020)

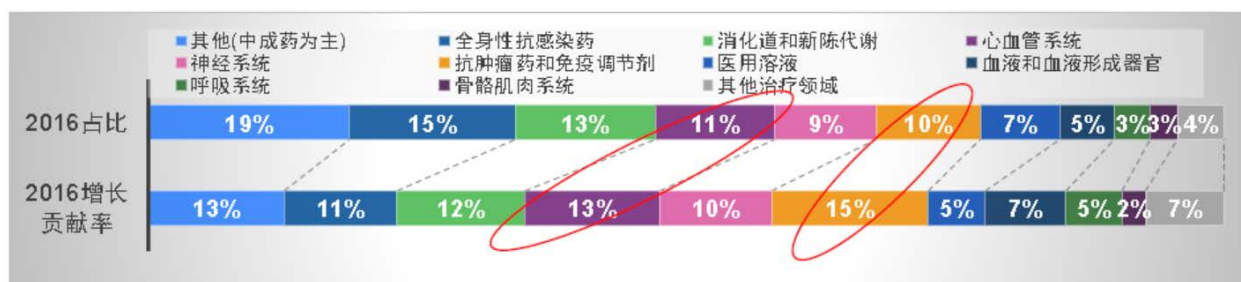
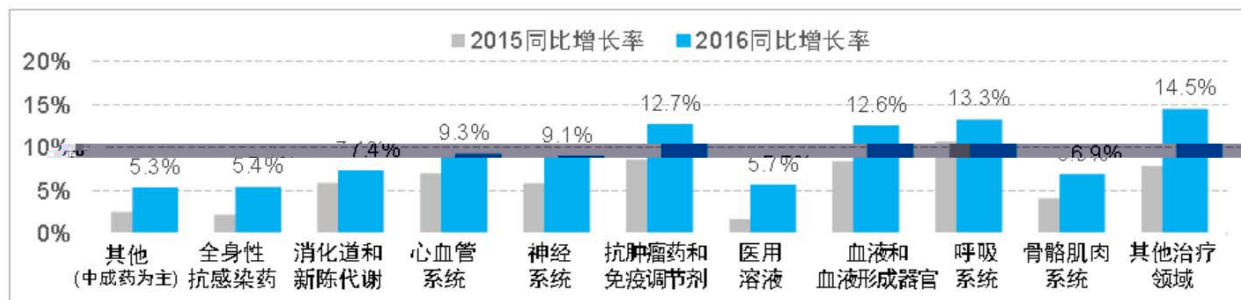


QuintilesMIS

>=100

MAT16Q4

中国医院药品市场：一级治疗领域增长格局



QuintilesMIS

>=100

2016Q4

4

5

2011

1

“ ”

2013

2016

29.13%

“

”

2016

2016

10

EGFR-TKI

2017

6

2016

103,506.09

13.16%

36,879.59

6.81%

I II

1

	Capio Biosciences Inc.
	Xcovery Holding Company LLC

2

--	--	--	--	--	--	--	--	--

Capio Biosciences

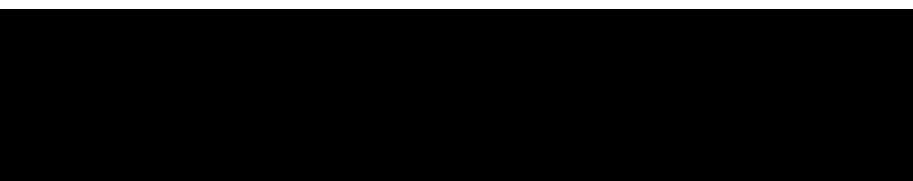
Inc 1,066,667

1,625.06

-23.58

0.84%

A



2016 103,506.09 13.16% 36,637.24
 2.31% 42,445.63 6.45%
 36,879.59 6.81% 2016 5 54%
 1399 /

2016
 1.01 5.21%
 216,730.30 88.95%
 4100
 192,433.10 116.63%
 32.88% 15.84%
 99.98%
 2016 10 31.46% 13.36% 2016
 54% 2017 2
 2017
 2017 15
 2017
 2016 788499 39322
 1890759 52 “ ”
 2016
 1000

2016 1.62
 15.60% 2016 11 2 5
 C-met BPI-9016M I
 2016 3 BPI-2009C
 7 I 2015
 12 15
 8 T790M EGFR
 BPI-15086 12 I 8
 Xcovery ALK X-396 II III
 I “ ” BPI-3016
 12 2017 3

2016
 X-396
 77.4091%

10
 Capiro
 Xcovery

Capiro Biosciences, Inc.
 2016
 MIL60

2016
 100%
 2016
 11
 2016 10

2016
 15
 288
 “ ”

1

“ ” “ ”

2

1

	2016		2015		
	1,035,060,899.76	100%	914,663,873.40	100%	13.16%
	1,035,060,899.76	100.00%	914,663,873.40	100.00%	13.16%
	1,034,831,980.52	99.98%	912,876,979.56	99.80%	13.36%
	-20.51	0.00%	17,453.84	0.00%	-100.12%
	0.00	0.00%	1,700,000.00	0.19%	-100.00%
	228,939.75	0.02%	69,440.00	0.01%	229.69%
	212,601,160.59	20.54%	192,688,394.15	21.07%	10.33%

	366,968,468.25	35.45%	316,148,866.74	34.56%	16.07%
	198,480,272.67	19.18%	183,946,472.27	20.11%	7.90%
	257,010,998.25	24.83%	221,880,140.24	24.26%	15.83%

2**10%**

		1,162,156.25	3.54%	1,114,930.64	3.99%	4.24%
		889,673.29	2.71%	662,252.04	2.37%	34.34%
		2,301,332.01	7.01%	2,277,364.59	8.15%	1.05%

6

100%

“ ”

7

8

	689,515,631.80
	66.62%
	0.00%

5

1		170,044,886.48	16.43%
2			

4		8,791,926.84	14.08%
5		5,968,820.68	9.56%
	--	49,566,222.00	79.36%

3

	2016	2015		
	398,575,483.67	337,821,577.12	17.98%	
	220,240,116.14	173,409,141.67	27.01%	
	701,171.16	-309,535.64	-326.52%	

4

				2017 3	2017
1	BPI-15086	1			
2	BPI-9016	1			

12	BPI-23000					
13	BPI-24000	1				

44000

5 () TEMC /P /MCEMC 2 372/TT 7 BDC 9.927 0 Td03 Td5TEMC /San /MCID 35 BDC /TT2 1 T5 () TEMC /P /MCEMC 2 372/TT 7 BDC 9.927 0 Td03 Td7TEMC /San /MCID 11 BDC /TT2

	30.30%	21.21%	23.66%
	161,503,143.73	119,943,694.51	88,269,313.11
	15.60%	13.11%	12.53%
	184,907.29	2,602,856.35	3,128,270.88
	0.11%	2.17%	3.54%
	0.05%	0.76%	1.17%

5

	2016	2015	
	1,271,214,232.13	1,102,626,912.95	15.29%
	864,161,213.21	717,063,079.89	20.51%
	407,053,018.92	385,563,833.06	5.57%
	1,422,543,404.89	1,141,159,154.71	24.66%
	2,463,751,083.91	1,551,623,971.33	58.79%
	-1,041,207,679.02	-410,464,816.62	153.67%
	682,971,411.50	146,556,000.00	366.01%
	156,985,990.45	62,788,568.13	150.02%
	525,985,421.05	83,767,431.87	527.91%
	-106,156,179.92	62,340,235.49	-270.29%

(1) 246,375.11 58.79%

Capio
(2) 68,297.14 366.01%

(3) 15,698.60 150.02%

Xcovery Holding Company LLC

	4,722,417.50	1.11%	Xcovery	
	1,214,069.59	0.29%		
	61,281,388.67	14.44%	6,124.27	
	3,197,490.35	0.75%		

1

	2016		2015			
	153,949,621.60	7.10%	260,105,801.52	22.68%	-15.58%	
	38,120,121.87	1.76%	27,440,835.42	2.39%	-0.63%	
	74,977,087.93	3.46%	47,154,658.49	4.11%	-0.65%	
		0.00%		0.00%		

	980,120,618.90	45.22%	220,580,303.34	19.23%	25.99%	
	8,581,146.20	0.40%	18,125,353.36	1.58%	-1.18%	
	142,684.60	0.01%	1,820,564.31	0.16%	-0.15%	GSP
	10,000,000.00	0.46%	5,000,000.00	0.44%	0.02%	SHAOJING HU 15086
		0.00%	5,840,000.00	0.51%	-0.51%	
	47,752,059.86	2.20%	17,197,067.87	1.50%	0.70%	
						Beta Pharma Inc.
	71,338,894.46	3.29%	18,768,243.59	1.64%	1.65%	

1

305,785,093.46	192,476,883.28	58.87%

2

Capio Biosciences, Inc.			16,250,640.00	20.17%	Seungpyo Hong Andrew Wang					-235,820.41
	--	--	16,250,640.00	--	--	--	--	--	0.00	-235,820.41

3

				160,695,316.45	341,217,744.19		91.09%			GMP
				26,147,222.76	27,876,801.53		10.81%			
				102,691,914.25	111,674,405.50		33.97%			
	--	--	--	289,534,453.46	480,768,951.22	--	--	0.00	0.00	--

4

5

1

--	--	--	--	--	--	--	--	--	--	--

2016

65,735

48,644.31

48,644.31

0

2

	()	(1)	(2)	(3) (2)/(1)					
		24,000	24,000	13,838.76	13,838.76	57.66%			
		38,000	38,000	33,759	33,759	88.84%			
		1,300	1,300	845.2	845.2	65.02%			
		2,435	2,435	201.35	201.35	8.27%			
	--	65,735	65,735	48,644.31	48,644.31	--	--	--	--
	--	65,735	65,735	48,644.31	48,644.31	--	--	0	--
	2016 12 31	GMP							
	2016 11 2	46,003.50							
	2016 11 12	46,003.50							
	2016 11 22	2016							

3

1

2

	100%	2016 5 5	732	-19.87		1.24%					

1

EGFR-TKI

“ ”

2025

QuintilesIMS

2012-2016

14%

2017-2020

6% 2016 6975 8.1%

10%

2015 73.3

80-85% NSCLC EGFR

40% Molecular biology of lung cancer *J Thorac Dis* 2013;5(S5):S479-S490 PIONEER

NSCLC EGFR 50.2% Shi YK, Li J, Zhang S, et al. Molecular Epidemiology of EGFR mutations in asian patients with advanced non-small-cell lung cancer of adenocarcinoma histology -Mainland China subset analysis of the PIONEER study. *PLoS One*, 2015, 10(11): e0143515.

EGFR 24

2016 10 EGFR-TKI

2017 2 23 2017 2017

EGFR-TKI

CFDA

2015 8 44

CFDA CDE CDE 2016 3 CFDA

1

GMP GSP

1

I CM082 II CM082

II ALK X-396 III I

c-Met BPI-9016M I EGFR-T790M BPI-15086 I

2

“ ”

“ ”

”

3

5

10

10

2017

2017

2017

BPI-16000 BPI-17000 BPI-18000

5

2

1

BPI-9016M

BPI-15086 X-396 BPI-2009C

BPI-3016

2017

CM082

X-396

4

2016 5 20

2016 515

1,399 / 7

2,358 / 10

3

2016 8

30%

I III

1

2016-017

2016

	401,000,000
	72,180,000.00
	348,271,630.76
	100.00%



	YINXIANG WANG FENLAI TAN				2016-11-07	2019-11-06
	YINXIANG WANG FENLAI TAN		6	20 6	2016-11-07	2017-05-06
	;		6	.	2016-11-07	2019-11-06
	;		6	20 6	2016-11-07	2017-05-06
	;		6	.	2016-11-07	2019-11-06
	BETA PHARMA, INC.;HANCHENG ZHANG;LAV Equity (Hong Kong) Co., Limited;Sequoia Capital China GFII (HK) Limited;		/	/	2016-11-07	2017-11-06
	;		/	/		
	;					
	;				2016-11-07	2019-11-06

	;			2016-11-07	2019-11-07	
	;			2016-11-07	2019-11-06	
	;		6 20 6	2016-11-07	2017-05-06	
	;			2016-11-07	2017-11-06	
	;		6 20 6	2016-11-07	2017-05-06	
YINXIANG WANG			YINXIANG WANG 2 30% YINXIANG WANG 2	2016-11-07	2021-11-06	
		3				
Casey Shengqiong Lou;				2016-11-07	2019-11-06	
Casey Shengqiong Lou;			6 20 6	2016-11-07	2017-05-06	

			6			
			2	10%	2	
			3		2016-11-07	2021-11-06
			2	70%		
			YINXIANG WANG			

				2016-11-07	
YINXIANG WANG FENLAI TAN; ;	1 2 WANG YINXIANG FENLAI TAN			2016-11-07	
YI SHI;YING DU; ; ; ; JIABING WANG; ; ; SHAOJING HU	YI SHI YING DU SHAOJING HU JIABING WANG			2016-11-07	
			/	2016-11-07	
YINXIANG WANG FENLAI TAN	YINXIANG WANG TAN FENLAI			2016-11-07	

		/			
YINXIANG WANG		“ YINXIANG WANG ”		2016-11-07	
;			/	2016-11-07	
; ; ;			/	2016-11-07	
YI SHI;YING DU; ;JIABING WANG;SHAOJING HU		YI SHI YING DU WANG SHAOJING HU JIABING		2016-11-07	



/

	78
	3

:

1**2****3**

4

5

1	2016 7 30		Xcovery		Xcovery
	900	2016 12 31			
	Xcovery	750			
2	SHAOJING HU	2014 1 24		2015 10 6	
15086		SHAOJING HU	2014 1 24		2015
10 6	15086		SHAOJING HU	15086	20%
	I	5,000	SHAOJING HU		
1,000	2015		2015		
2016 8	15086 I			50% 500	
	-		2016 11		50%
500	SHAOJING HU				
			SHAOJING HU		
			500	()	

1

1

2

3

2

3

1

			4,000	2015 10 16	2016 01 15		4,000		33.41	33.41	
			2,000	2015 12 11	2016 03 15		2,000		16.4	16.4	
			5,000	2015 12 25	2016 04 07		5,000		45.59	45.59	
			3,000	2015 10 28	2016 01 28		3,000		25.13	25.13	
			8,000	2015 12 30	2016 03 31		8,000		72.8	72.8	
			2,000	2016 01 05	2016 01 29		2,000		3.95	3.95	
			2,000	2016 02 02	2016 02 29		2,000		4.44	4.44	
			2,000	2016 04 05	2016 04 29		2,000		3.95	3.95	
			2,000	2016 05 04	2016 05 31		2,000		4.14	4.14	
			1,000	2016 01 11	2016 02 14		1,000		2.89	2.89	
			3,000	2016 02 03	2016 03 03		3,000		7.64	7.64	

1,000 2016 02 17 2016 03 18

1,000

			8,000	2016 04 05	2016 07 04		8,000		62.3	62.3	
			1,000	2016 04 13	2016 07 13		1,000		7.75	7.75	
			3,000	2016 06 01	2016 09 01		3,000		23.25	23.25	

--	--



			01									26	
			2016 01 01									2016 10 26	
			2016 01 01									2016 10 26	
			2016 01 01									2016 10 26	
			2016 01 01									2016 10 26	
			2016 01 01									2016 10 26	
		“											
		EGFR	2012 07 20						399.4			2016 10 26	
		III											

		BRA IN ”											
		“GK ”	2013 03 26									2016 10 26	
	SHAOJ ING HU	9016 15086	2015 10 06							SHAOJ ING HU		2016 10 26	
			2014									2016 10 26	
			2014 11 13					390				2016 10 26	

Xcover
y

2014
10
25

2016
10
26

	Bioscience INC.	LICENSE AGREEMENT	24									26	
			2013 11 01									2016 10 26	
		“ ”	2013 04 19									2016 10 26	
	Seungpyo Hong Andrew Wang		2016 08 20									2016 10 26	
			2015 06 01									2016 10 26	
			2013 09 16					6,000				2016 10 26	
			2014 09 15					5,500				2016 10 26	
			2015 07 01					3,170				2016 10 26	

			2015 08 01						25,000				2016 10 26
			2016 03 01										2016 10 26
			2016 04 01						5,000				2016 10 26
	XCOV ERY	XCOV ERY	2016 08 23								FENLA ITAN XCOV ERY		2016 10 26
			2016 08 01						4,000				2016 10 26
			2016 08 01						2,000				2016 10 26
			2016 08 01						4,000				2016 10 26

			2016 04 01						8,000				2016 10 26	
			2016 06 01						5,000				2016 10 26	

2

NH₃ HCl DMF

4 3

“ + ”

3 “ + ”

2016

	mg/m ³	(kg/h)				
				(mg/m ³)	(kg/h)	
	5.63	0.0364		120	3.5	(GB16297-1996) 2
HCl	0.927	0.0236		100	0.26	
NH ₃	1.50	0.00774		--	4.9	(GB14554-93)
()	--	174		--	2000	
DMF	1.14	0.0145		20	0.36	
	26.7	0.068		300	2.9	
	18.1	0.046		20	0.40	
	7.76	0.020		350	1.55	

1

	360,000,000	100.00%	0	0	0	0	0	360,000,000	89.78%
1	0	0.00%	0	0	0	0	0	0	0.00%
2	0	0.00%	0	0	0	0	0	0	0.00%
3	253,692,000	70.47%	0	0	0	0	0	253,692,000	63.26%
	253,692,000	70.47%	0	0	0	0	0	253,692,000	63.26%
	0	0.00%	0	0	0	0	0	0	0.00%
4	106,308,000	29.53%	0	0	0	0	0	106,308,000	26.51%
	67,332,960	18.70%	0	0	0	0	0	67,332,960	16.79%
	38,975,040	10.83%	0	0	0	0	0	38,975,040	9.71%
	0	0.00%	41,000,000	0	0	0	41,000,000	41,000,000	10.22%
1	0	0.00%	41,000,000	0	0	0	41,000,000	41,000,000	10.22%
2	0	0.00%	0	0	0	0	0	0	0.00%
3	0	0.00%	0	0	0	0	0	0	0.00%
4	0	0.00%	0	0	0	0	0	0	0.00%
	360,000,000	100.00%	41,000,000	0	0	0	41,000,000	401,000,000	100.00%

2016 10 14

[2016]2350

4,100

4,100

A

2016 11 7

4,100

2016 10 36,000 40,100
 4.80 / 1.01 / 5.21%
 94.33%

2

1

	2016 10 27	17.57	41,000,000	2016 11 07	41,000,000	

[2016]2350

4,100

[2016]770

“ ”

“300558”

4,100

2016 11 7

2

3

1

10			
	1,323,000		1,323,000
-	1,000,000		1,000,000
- - - 1	653,997		653,997
	496,930		496,930
	438,054		438,054
- - -005L-CT001	321,893		321,893
	300,000		300,000
-	288,969		288,969
	250,328		250,328
	183,992		183,992
10	10		
10			
	5		263,930

--	--

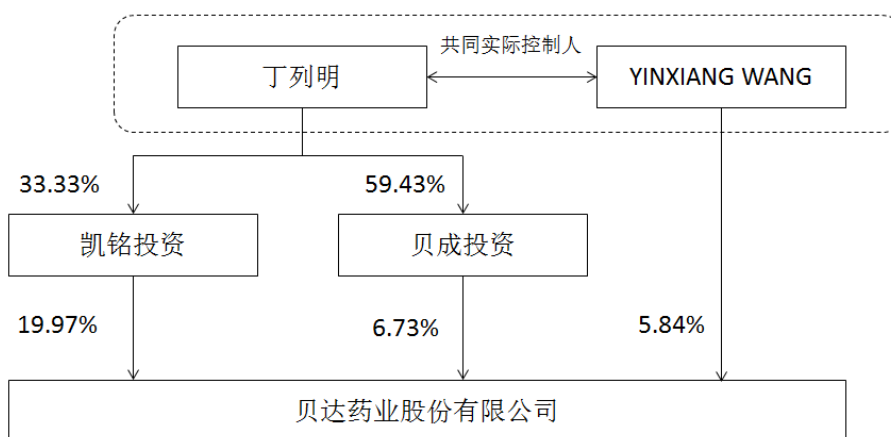
2

	YINXIANG WANG

3

;

YINXIANG WANG		
	YINXIANG WANG	
10	10	



4 **10%**

	/			
		2011 07 25	2,000	

5

				53	2013 08 23	2019 08 19	0	0	0	0	0
YINXIANG WANG				52	2013 08 23	2019 08 19	23,425,560	0	0	0	23,425,560
FENLAI TAN				53	2013 08 23	2019 08 19	4,320,000	0	0	0	4,320,000
YI SHI				44	2013 08 23	2019 08 19	0	0	0	0	0
YING DU				52	2013 08 23	2019 08 19	0	0	0	0	0
				48	2013 08 23	2019 08 19	0	0	0	0	0
				57	2013 08 23	2019 08 19	0	0	0	0	0
				54	2013 08 23	2019 08 19	0	0	0	0	0
				38	2015 12 25	2019 08 19	0	0	0	0	0
				55	2013 08 23	2019 08 19	0	0	0	0	0
				48	2015 11 25	2019 08 09	0	0	0	0	0

				45	2017 03 16	2019 08 19	0	0	0	0	0
JIABING WANG				53	2016 02 28	2019 08 19	0	0	0	0	0
				42	2013 08 23	2019 08 19	0	0	0	0	0
				39	2013 08 23	2019 08 19	0	0	0	0	0
				45	2017 03 31	2019 08 19	0	0	0	0	0
				67	2013 11 09	2017 02 21	0	0	0	0	0
				54	2013 08 23	2017 03 16	0	0	0	0	0
				53	2013 08 23	2017 01 26	0	0	0	0	0
SHAOJING HU				54	22013 08 23	2017 01 25	0	0	0	0	0
	--	--	--	--	--	--	27,745,560	0	0	0	27,745,560

SHAOJING HU			2017 01 25	
			2017 01 26	
			2017 02 21	
			2017 03 16	
			2017 03 31	

1963 12

2016 8 20 2019 8 19 1984

8 1986 8 1989 8 1992 6

1992 6 1996 7 1996 7 2002 6

2003 1 2008 8 2008 8 2013 8

2013 8

YINXIANG WANG 1965 2

2016

8 20 2019 8 19 1980 1983

1983 1985 1985 1988

1989 1992 1992

1993 1993 1999

1999 2002 2003

1 2013 8 2013 8

YI SHI 1972 4

2016 8 20 2019 8 19 1999 2000

2000 2001 2001 2007

2007

YING DU 1964 10

2016 8 20 2019 8 19

YING DU 2002 YING DU

2006 YING DU

DU YING DU

FENLAI TAN 1963 11

2016 8 20 2019 8 19

1986 1994 2000 2003

2003 2007 2007 6 2008 11

2008 12 2013 8 2013 8

2016 2 2016 2

1968 11

2017 3 16 2019 8 19 2016 8 20 2019 8 19

1992 1995 1995 2011

2011 4 2013 8

2013 8 2016 2 2016 2 2017 3 16

1960 3

2016 8 20 2019 8 19

1982 1992

1992 1993

2000

MBA

2001 11

2002 1 6 MIT

2004 3 5

2006 4

1963 2

2016 8 20 2019 8 19

1988 1991

()

1991 1995

2017 3 16

1962 8

2016 8 20 2017 3 16

1982 1984

1987 1988 1999 2001

2001 2004

2004 2013

8

2013 8

2017 2 21

3 16 2017

JIABING WANG

1963 8

2016 8 20 2019 8 19

1980 1984

1984 1987

1987 1990

1992 1997

1997 2011

2011 2016

2016 1

1974 6

-BI

MBA

2016 8 20 2019 8 19

2009 1 2011 4

2011 5 2013 8

2013 8

2017 3 31

1977 11

EMBA

2016 8 20 2019 8 19

2000 2001

2002 2003

10

2003 2013 8

2013 8 2016 2

2016 2

1971 4

MBA

2003 1 2009 2

2009 2 2011 2

2011 2 2016 8

2016 8 2017 3

2017 3 31

1964 3

EMBA

2016 8 20 2017 1 26

1987 1992

1994 1 1996 12

1997 1 2010 4

BU 2002 6

2004 5

EMBA 2010 2013 8

2013 8

2017 1 26

SHAOJING HU 1963 1
 2016 8 20 2017 1 25 1986 1992
 1992 1998 1998 1999
 2000 2004 (IDD) II 2004 2005
 Neurogen 2005 2009 (IDD) V 2009 2013 8
 2013 8 2017 1 25
 SHAOJING HU

			2013 04 07		
			2011 11 24		
YI SHI	LAV Equity (Hong Kong) Co., Limited		2011 07 13		

			2013 04 07		
			2011 11 24		
			2010 11 16		
			2013 09 17		
			2013 11 22		
			2014 10 04		
			2016 04 29		
	Xcovery Holding Company LLC		2016 09 01		
	Xcovery Betta Pharmaceuticals, Inc.		2017 01 06		
			2017 01 20		
YINXIANGW ANG			2010 11 16		
YINXIANGW ANG			2013 09 17		

YINXIANGW ANG			2014 12 23		
YINXIANGW ANG			2014 12 23		
FENLAI TAN			2010 11 16		
FENLAI TAN	Xcovery Holding Company LLC		2015 11 17		
YI SHI	Lilly Asia Ventures Management Co. Ltd		2011 03 29		
YI SHI	LAV GP Corporate Co., Ltd		2011 03 29		
YI SHI	Novast Holdings Limited		2010 10 15		
YI SHI	Innovent Biologics,		2012 06 15		
YI SHI	HD Biosciences Inc.		2008 07 15		
YING DU	ZAI Lab Limited		2014 05 06		
YING DU			2014 03 24		
YING DU	JHL biotech,Inc		2012 12 17		
			2016 06 17		
			2016 11 29		
			2013 11 22		
			2013 11 22		
			2016 12 19		

			53		203	
YINXIANG WANG			52		155	
YI SHI			44		0	
YING DU			52		0	
FENLAI TAN			53		176	
			57		10	
			54		10	
			38		10	
			55		90	
			48		100	
			48		168	
JIABING WANG			53		160	
			42		114	
			39		106	
			67		0	
			54		30	
			53		18	
SHAOJING HU			54		563	
	--	--	--	--	1,913	--

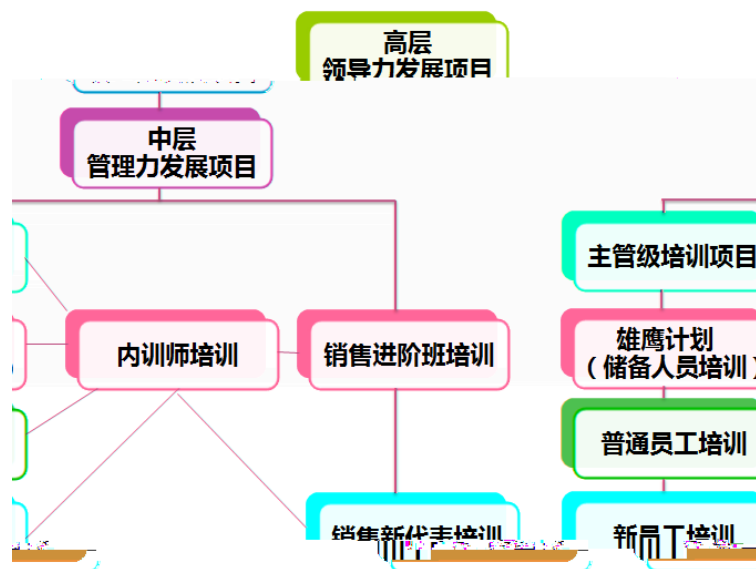
1

	847
	12
	859
	859
	9

	87
	344
	246
	23
	159
	859
	17
	96
	386
	229
	131
	859

2016

MBTI



1

5

10%

2

3

9

3

4

6

70

5

6

7

1

2

3

4

5

1

2015		100.00%	2016 03 28		
2016		100.00%	2016 06 01		
2016		100.00%	2016 07 30		
2016		100.00%	2016 08 20		
2016		78.16%	2016 12 08	2016 12 09	www.cninfo.com.cn

2

1

	11	11		0	0	
	11	11		0	0	
	11	11		0	0	
						5

2

3

1
2016

1 2016 2 28
1 2013 -2015
2
3 2015

2 2016 9 8
1 2013 1 1 2016 6 30
2 2016

2
2016

2016 2 28

JIABING WANG

2016 8 4

2016 8 20

3
2016

2016 2 28

2015

4
2016

1 2016 6 17

2 2016 7 8
1 CTC
2 Xcovery

2016

360

1

2

	2017 4 6	
	2017 4 6	http://www.cninfo.com.cn
		100.00%
		100.00%
	1	1
	2	2
	3	3

	1			
		5%		
	500			
		5%		
	500			
		5%		
	500			
		5%	500	1
	2			5% 2
		5%		
	2%		200	5% 3
		2%		
	5%			2%
	200			
		5%	2%	
	200			
		5%		
	2%	200	3	
			0	
			0	
			0	
			0	

	2017 03 31

1

2016 12 31

	153,949,621.60	260,105,801.52
	38,120,121.87	27,440,835.42
	1,758,339.95	2,590,273.17
	54,766,966.67	2,340,357.39
	74,977,087.93	47,154,658.49
	980,120,618.90	220,580,303.34
	1,303,692,756.92	560,212,229.33
	8,100,000.00	8,100,000.00

	135,070,382.42	122,207,366.06
	388,691,557.77	83,413,751.79
	169,488,049.96	191,258,856.73
	146,818,171.51	156,195,104.93
	8,581,146.20	18,125,353.36
	142,684.60	1,820,564.31
	6,718,207.01	5,711,648.43
	863,610,199.47	586,832,645.61
	2,167,302,956.39	1,147,044,874.94
	10,000,000.00	5,000,000.00
		5,840,000.00
	47,752,059.86	17,197,067.87
	53,542,138.10	51,380,262.87
	22,791,258.08	23,682,637.22
		75,673.89

	71,338,894.46	18,768,243.59
		16,425,000.00
	205,424,350.50	138,368,885.44
		85,400,000.00
	31,942,762.51	28,536,440.69
	898,371.97	785,904.27
	32,841,134.48	114,722,344.96
	238,265,484.98	253,091,230.40
	401,000,000.00	360,000,000.00
	626,999,485.46	10,649,485.46
	15,875,453.03	6,006,390.56
	111,797,224.63	73,100,376.77

2016

	768,658,837.33	438,559,787.58
	1,924,331,000.45	888,316,040.37

	70,293,413.21	77,638,715.91
	8,581,146.20	18,125,353.36
	102,924.82	1,661,525.49
	6,661,568.26	5,690,844.68
	798,755,898.63	578,413,107.59
	2,181,570,720.57	1,151,663,741.22
	10,000,000.00	5,000,000.00
		5,840,000.00
	47,292,816.65	16,737,824.66
	52,694,041.51	50,635,792.70
	22,528,275.68	23,171,782.25
		75,673.89
	71,088,894.46	18,248,243.59
		16,425,000.00
	203,604,028.30	136,134,317.09
		85,400,000.00

	31,942,762.51	28,536,440.69
	898,371.97	785,904.27
	32,841,134.48	114,722,344.96
	236,445,162.78	250,856,662.05
	401,000,000.00	360,000,000.00
	626,999,485.46	10,649,485.46
	111,797,224.63	73,100,376.77
	805,328,847.70	457,057,216.94
	1,945,125,557.79	900,807,079.17
	2,181,570,720.57	1,151,663,741.22

3

	1,035,060,899.76	914,663,873.40
	1,035,060,899.76	914,663,873.40
	673,410,910.23	555,787,111.71
	32,829,272.62	27,943,123.89

	19,850,797.05	17,129,576.50
	398,575,483.67	337,821,577.12
	220,240,116.14	173,409,141.67
	701,171.16	-309,535.64
	1,214,069.59	-206,771.83
“ ”		
“ ”	4,722,417.50	-761,921.96
	-11,732,262.37	-7,222,918.67
“ ”		
“ ”	366,372,407.03	358,114,839.73
	61,281,388.67	42,933,261.33
	8,047.84	
	3,197,490.35	2,327,854.55
	472,435.43	35,006.06
“ ”	424,456,305.35	398,720,246.51
	56,591,540.95	55,285,306.53
“ ”	367,864,764.40	343,434,939.98
	368,795,897.61	345,298,066.85
	-931,133.21	-1,863,126.87
	9,869,062.47	6,008,390.56
	9,869,062.47	6,008,390.56
1.		
2.		

	9,869,062.47	6,008,390.56
1.		
2.		
3.		
4.		
5.	9,869,062.47	6,008,390.56
6.		
	377,733,826.87	349,443,330.54
	378,664,960.08	351,306,457.41
	-931,133.21	-1,863,126.87
	1.01	0.96
	1.01	0.96

4

	1,035,060,899.76	914,663,873.40
	32,829,272.62	27,943,123.89
	19,675,435.32	17,129,576.50
	398,575,483.67	337,494,023.45
	213,417,642.65	164,839,363.75
	1,880,950.72	-1,187,430.06
	30,179.59	-288,736.83

“ ”		
“ ”	16,862,384.72	3,771,633.95
	-235,820.41	
“ ”	385,514,319.91	372,505,586.65
	61,279,025.01	42,833,261.33
	8,047.84	
	3,197,490.35	2,327,854.55
	472,435.43	35,006.06
“ ”	443,595,854.57	413,010,993.43
	56,627,375.95	54,880,826.03
“ ”	386,968,478.62	358,130,167.40
1.		
2.		

	389,816,611.69	344,772,232.42
	864,161,213.21	717,063,079.89
	407,053,018.92	385,563,833.06
	1,409,904,794.03	1,131,450,996.71
	466,854.73	850.00
	5,543,756.13	
	6,628,000.00	9,707,308.00
	1,422,543,404.89	1,141,159,154.71
	294,500,443.91	133,597,971.33
	2,169,250,640.00	1,418,026,000.00
	2,463,751,083.91	1,551,623,971.33
	-1,041,207,679.02	-410,464,816.62
	657,350,000.00	
		146,556,000.00
	25,621,411.50	
	682,971,411.50	146,556,000.00
	100,400,000.00	61,156,000.00
	4,558,490.45	1,383,768.13
	52,027,500.00	248,800.00
	156,985,990.45	62,788,568.13

	525,985,421.05	83,767,431.87
	2,013,059.13	3,473,787.18
	-106,156,179.92	62,340,235.49
	260,105,801.52	197,765,566.03
	153,949,621.60	260,105,801.52

6

	2,323,782,254.01	1,017,708,227.62
	-978,849,998.02	-473,978,236.31
	657,350,000.00	
		146,556,000.00
	25,621,411.50	60,005,107.70
	682,971,411.50	206,561,107.70
	100,400,000.00	61,156,000.00
	4,558,490.45	1,383,768.13
	110,160,000.00	14,600,000.00
	215,118,490.45	77,139,768.13
	467,852,921.05	129,421,339.57
	13.69	782,748.02
	-95,961,959.37	52,303,664.13
	231,072,080.53	178,768,416.40
	135,110,121.16	231,072,080.53

7

	360,000,000				10,649,485.46		6,006,390.56		73,100,376.77		438,559,787.58	5,637,604.17	893,953,644.54

	360,000,000				10,649,485.46		6,006,390.56		73,100,376.77		438,559,787.58	5,637,604.17	893,953,644.54
“ ”	41,000,000				616,350,000.00		9,869,062.47		38,696,847.86		330,099,049.75	-931,133.21	1,035,083,826.87
							9,869,062.47				368,795,897.61	-931,133.21	377,733,826.87
	41,000,000				616,350,000.00								657,350,000.00
1	41,000,000				616,350,000.00								657,350,000.00
2													
3													
4													
									38,696,847.86		-38,696,847.86		
1									38,696,847.86		-38,696,847.86		
2													
3													
4													
1													
2													
3													
4													
1													
2													
	401,000,000				626,999,485.46		15,875,453.03		111,797,224.63		768,658,837.33	4,706,470.96	1,929,037,471.41

	360,000,000				8,921,960.66		-2,000.00		37,287,360.03		129,074,737.47	7,749,730.41	543,031,788.57

3													
4													
1													
2													
	360,000,000				10,649,485.46	6,006,390.56	73,100,376.77	438,559,787.58	5,637,604.17	893,953,644.54			

8

	360,000,000				10,649,485.46				73,100,376.77	457,057,216.94	900,807,079.17		
	360,000,000				10,649,485.46				73,100,376.77	457,057,216.94	900,807,079.17		
“ ”	41,000,000				616,350,000.00				38,696,847.86	348,271,630.76	1,044,318,478.62		
										386,968,478.62	386,968,478.62		
	41,000,000				616,350,000.00						657,350,000.00		
1	41,000,000				616,350,000.00						657,350,000.00		
2													
3													
4													
									38,696,847.86	-38,696,847.86			
1									38,696,847.86	-38,696,847.86			
2													
3													

1											
2											
3											
4											
1											
2											
	401,000,000				626,999,485.46				111,797,224.63	805,328,847.70	1,945,125,557.79

1									35,813,016.74	-35,813,016.74	
2											
3											



4	
---	--

“ ” “

”

1

”

—— “
15 ——

2

12

1

2

1 1 12 31

3

12

4

5

3

4

7

1

2

3

4

5

8

“

1
2

1
2

1

2

11

1

2

1	

90 90	0.00%	0.00%
90 -1 1	5.00%	5.00%
1 2	10.00%	10.00%
2 3	30.00%	30.00%
3	100.00%	100.00%

3

12

1
2

13

1

2

1

2

3

14

1

1

2

2



10-20

5%

2

BPI-3006	10	
	10	
	50	
ERP	5	
	5	

2

1 2

III

III

3

4

1

2

3

4

5



19

20

21

1

2

22 /

23

1

2016 12 3

[2016]22

2016 5 1

1 “ ” “ ”

2 2016 5 1 “ ”

3 “ ” “ ” “ ”

4 “ ” “ ” “ ” “ ” “ ” “ ” “ ”

2

1

2016

		17%,6%
		7%

	38,154,203.68	100.00%	34,081.81	0.09%	38,120,121.87	27,453,356.87	100.00%	12,521.45	0.05%	27,440,835.42
	38,154,203.68	100.00%	34,081.81	0.09%	38,120,121.87	27,453,356.87	100.00%	12,521.45	0.05%	27,440,835.42

1						
90	90		38,038,963.98			
90	-1	1				
1			38,038,963.98			
1	2		2,450.50	245.05		10.00%
2	3		112,789.20	33,836.76		30.00%
			38,154,203.68	34,081.81		0.09%

2

21,560.36

0.00

3

4

		(%)
	9,633,141.40	25.25
	9,087,926.90	23.82
	5,921,861.40	15.52
	5,135,332.80	13.46
	4,143,133.80	10.86
	33,921,396.30	88.91

5

6

3

1

1	1,758,339.95	100.00%	590,273.17	22.79%
1 2			2,000,000.00	77.21%
	1,758,339.95	--	2,590,273.17	--

1

2

	570,000.00	32.42
	540,000.00	30.71
()	328,440.00	18.68
	84,960.00	4.83
	61,933.95	3.52
	1,585,333.95	90.16

4

1

	56,082,633.87	100.00%	1,315,667.20	2.35%	54,766,966.67	2,463,515.36	100.00%	123,157.97	5.00%	2,340,357.39

	56,082,633.87	100.00%	1,315,667.20	2.35%	54,766,966.67	2,463,515.36	100.00%	123,157.97	5.00%	2,340,357.39
--	---------------	---------	--------------	-------	---------------	--------------	---------	------------	-------	--------------

1							
90	90		32,181,699.36				
90	-1 1		21,823,125.15		1,091,156.26		5.00%
1			54,004,824.51		1,091,156.26		0.02%
1	2		2,039,659.36		203,965.94		10.00%
2	3		25,150.00		7,545.00		30.00%
3			13,000.00		13,000.00		100.00%

Xcovery Holding Company LLC		52,655,250.98	90 1	31,844,250.98 20,811,000.00	90	93.89% 1,040,550.00
		2,334,000.00	90 2	1 720,000.00 1,614,000.00	1	4.16% 197,400.00
		354,600.00	90 2	1 138,600.00 216,000.00	1	0.63% 28,530.00
		188,359.36	1 2	2 163,359.36 25,000.00	2 3	0.34% 23,835.94
		73,186.38	90	73,086.38 100.00	1 2	0.13% 10.00
	--	55,605,396.72		--		99.15% 1,290,325.94

6

7

8

5

1

	5,088,984.66		5,088,984.66	6,686,376.76	6,686,376.76
	3,482,861.54		3,482,861.54	2,039,846.95	2,039,846.95
	20,346,946.91		20,346,946.91	16,517,768.09	16,517,768.09
	1,048,261.37		1,048,261.37	633,033.13	633,033.13

	210,249.97		210,249.97			
	44,799,783.48		44,799,783.48	21,277,633.56		21,277,633.56
	74,977,087.93		74,977,087.93	47,154,658.49		47,154,658.49

2

3

4

6

	4,932,671.98	580,303.34
	187,946.92	
	975,000,000.00	220,000,000.00
	980,120,618.90	220,580,303.34

7

1

	8,100,000.00		8,100,000.00	8,100,000.00	8,100,000.00
	8,100,000.00		8,100,000.00	8,100,000.00	8,100,000.00
	8,100,000.00		8,100,000.00	8,100,000.00	8,100,000.00

2

3

	6,000,000.00			6,000,000.00					4.95%	
	2,100,000.00			2,100,000.00					14.00%	



3

4

5

-4	124,724,811.82	
-5	33,672,614.85	
-10	338,404.69	
-2	19,970,515.12	
-6	1,464,214.31	
-7	2,543,923.65	
-8	21,249,298.71	
-9	65,169,329.51	

10

1

	29,936,842.93		29,936,842.93	180,522,427.74	180,522,427.74
	27,876,801.53		27,876,801.53	1,729,578.77	1,729,578.77
	111,674,405.50		111,674,405.50	8,982,491.25	8,982,491.25
				24,358.97	24,358.97
	169,488,049.96		169,488,049.96	191,258,856.73	191,258,856.73

2

	374,598,200.00	180,522,427.74	160,695,316.45	311,280,901.26		29,936,842.93	91.09%	91.09%				

	257,788,600.00	1,729,578.77	26,147,222.76			27,876,801.53	10.81%	10.81%				
--	----------------	--------------	---------------	--	--	---------------	--------	--------	--	--	--	--

328,734,800.00

3.								
1								
4.								
1.	119,906,706.27				186,666.63	26,714,114.86	10,683.75	146,818,171.51
2.	122,890,288.95				506,666.67	32,762,593.76	35,555.55	156,195,104.93

2

12

	9,729,114.45					9,729,114.45	
	8,396,238.91	184,907.29					8,581,146.20
	18,125,353.36	184,907.29				9,729,114.45	8,581,146.20

	2008	9	12
	2010	1	13

13

	570,737.80			428,053.20	142,684.60
GSP	1,249,826.51	-22,694.01		254,371.94	972,760.56
	1,820,564.31	-22,694.01		682,425.14	972,760.56

14

/

1

	309,199.01	69,035.35	135,679.42	28,673.42
	31,942,762.51	4,791,414.37	28,536,440.69	4,280,466.10
-	2,385,048.59	357,757.29	2,925,059.50	438,758.91

	10,000,000.00	5,000,000.00
	10,000,000.00	5,000,000.00

5 8

16

		5,840,000.00
		5,840,000.00

0.00

17**1**

	14,138,560.36	13,199,516.31
	24,790,535.69	1,722,132.00
	3,412,846.31	34,820.00
	5,410,117.50	2,240,599.56
	47,752,059.86	17,197,067.87

2**1****18****1**

	50,614,481.39	195,067,375.50	193,058,146.85	52,623,710.04
-	765,781.48	10,025,072.00	9,872,425.42	918,428.06
		131,707.42	131,707.42	
		5,000,000.00	5,000,000.00	
	51,380,262.87	210,224,154.92	208,062,279.69	53,542,138.10

2

1	44,773,915.31	169,913,755.55	163,026,864.42	51,660,806.44
2		6,770,895.72	6,770,895.72	
3	429,901.41	5,733,841.85	5,622,969.89	540,773.37
	374,777.53	5,030,439.84	4,929,289.12	475,928.25
	19,349.68	235,631.44	232,541.38	22,439.74
	35,774.20	467,770.57	461,139.39	42,405.38
4	242,048.29	5,523,639.59	5,459,508.19	306,179.69
5	168,616.38	2,125,242.79	2,177,908.63	115,950.54
	5,000,000.00	5,000,000.00	10,000,000.00	

	9,796,457.26	10,847,567.19
	1,255,092.74	1,135,886.65
	629,540.67	628,060.76
	846,133.90	455,452.66
	259,747.22	282,659.31
		64,620.03
	269,803.15	269,168.90
	179,868.76	179,445.93
	561,176.20	971,032.80
	22,791,258.08	23,682,637.22

“ ”

20

		75,673.89
		75,673.89

21

1

	28,440,151.77	2,503,117.61
	12,667,088.06	3,569,467.04
	29,672,949.02	12,454,659.32
	558,705.61	240,999.62
	71,338,894.46	18,768,243.59

2

1

22

		16,425,000.00
		16,425,000.00

2013 1

1500		2015	500	2016
1000	2016 2 23	2015	500	2016 5 31
2016	1000	2016 8 29	2,341,458.33	2016 12
31				

23

1

		85,400,000.00
		85,400,000.00

24

	28,536,440.69	6,628,000.00	3,221,678.18	31,942,762.51	
	28,536,440.69	6,628,000.00	3,221,678.18	31,942,762.51	--

						/
	28,536,440.69	6,628,000.00	3,221,678.18		31,942,762.51	
	28,536,440.69	6,628,000.00	3,221,678.18		31,942,762.51	--

1

2015 52

2015

6,000,000.00

2016 20

16 7 628,000.00

575,666.67

52,333.33

+		—		
		41,000,000.00	401,000,000.00	

4,100

17.57

0.00

0,000.00

		618,361,861.46

	6,006,390.56	9,869,062.47			9,869,062.47		15,875,453.03
	6,006,390.56	9,869,062.47			9,869,062.47		15,875,453.03

28

	382,861.81	
	846,248.60	
	3,030,940.11	2,843,570.60
	6,021.88	68,152.97
	19,850,797.05	17,129,576.50

“ ”

32

	233,995,006.30	206,522,675.23
	115,748,106.91	94,626,235.38
	18,186,577.36	19,359,535.30
	3,736,442.41	8,565,355.60
	2,880,927.07	2,746,950.15
	24,028,423.62	6,000,825.46

	3,057,816.56	1,961,942.02

1				2006 9	2006 51	00
					400,000.00	
2	2016	40,000.00		2006 501	“863”	
	2006 12	1,980,000.00				2016
198,000.00						
3				2007 391		863
				2007 7	330,000.00	
2016	33,000.00					
4					2007 17	“863”
				2007 2	400,000.00	
	2016	40,000.00				
5					2007 103	2007
				2007 10	300,000.00	
		2016	30,000.00			
6					2007 1208	00
					2007 12	280,000.00
				2016	28,000.00	
7				2007 229		2007 1080
2007						
					2007 12	437,500.00
				2016	43,750.00	
8				2008 259	2008	
863				2008 7	990,000.00	
	2016	99,000.00				
9					2008 13	
				2008 2	437,500.00	
	2016	43,750.00				
10					2008 66	2008
				2008 2	300,000.00	
	2016	30,000.00				
11					2008 236	2008
				2008 9	600,000.00	
		2016	60,000.00			
12					2009 46	2008
				2009 1	187,500.00	
		2016	18,750.00			
13				2009 422		
				2009 4	760,000.00	
	2016	76,000.00				
14					2010 73	“863”
				2010 10	400,000.00	
	2016	40,000.00				

15	“	”		2010	B11	“
	”		2010	3		2,900,000.00
		2016	290,000.00			
16				2010	74	
			2010	10		2,522,500.00
		2016	252,250.00			
17				2011	6	
2010				2011	2	
425,300.00				2016		42,530.00
18				2011	69	2011
		2011	6	500,000.00		
2016	50,000.00					
19				2011	68	2011
		2011	6	5,000,000.00		
2016	500,000.00					
20				2012	55	
			2012	10		1,140,000.00
2016	131,538.47					
21				2012	483	2012
				2013	2	5,000,000.00
		2016	514,858.99			
22				2013	134	
				2014	1	5,000,000.00
2016						

4	2015 11 30			2016 2
23,000,000.00				
5	2016 2 14			2016 4
		15,000,000.00		
6		2016 12	2014	
	2016 5	12,000.00		
7	2016 2	2015		2016 6
200,000.00				
8				2016 127
2016 91	2016			2016 8
280,000.00				
9			2016 119	2016 100
2016				2016 8
5,000,000.00				
10			2015 85	2016 8
50,000.00				
11			2016 40	2016 13
2016				2016 8
50,000.00				
12				2015 79
2015				2016 8
55,000.00				
13			2016 40	2015
				2016 9
200,000.00				
14		2009 287		2016 9
43,000.00				
15		2016 21	2016	
		2016 9	25,000.00	
16			2016 136	2015
		2016 10	950,000.00	
17				2016 107
			2016 10	55,000.00
18			2014 112	
		2016 10	151,020.00	
19			2015 186	
	2016 10		39,344.27	
20			2016 103	2016
	2016 12		398,700.00	
21			2016 7	2016
	2016 12		200,000.00	
22				2016 41

2016		2016	12
1,000,000.00			
23		2016	66
		2016	12
			2015
			2,789,200.00
1		2016	62381
12	547,845.83		
2		2016	189
	2016	8	776,826.24
3		2016	47
	2016	8	141,329.66
4		2016	455
	2016	8	731,731.10

38

	472,435.43	35,006.06	472,435.43
	238,871.00	35,006.06	238,871.00
	1,486,887.50	1,300,000.00	1,486,887.50
	684,931.13	916,026.92	
	553,236.29	76,821.57	553,236.29
	3,197,490.35	2,327,854.55	2,512,559.22

39**1**

	57,485,631.83	56,595,466.67
	-894,090.88	-1,310,160.14
	56,591,540.95	55,285,306.53

2

	424,456,305.35
/	63,668,445.80
	0.02
	-447,878.67
	-6,629,026.20
	56,591,540.95

40

41

1

	1,308,142.08	1,141,180.94
	259,605.30	2,879.36
	55,823,264.27	38,260,100.00
	11,092,953.90	3,263,860.87
	68,483,965.55	42,668,021.17

2

	233,790,723.50	206,522,675.23
	97,827,632.55	75,239,467.04
	19,856,549.27	20,460,475.37
	3,916,642.41	8,565,355.60
	3,809,589.92	5,292,073.89
	26,422,154.81	22,174,208.88
-	67,883.05	55,618.42

	1,486,887.50	1,300,000.00
	2,638,548.68	5,162,357.99
	389,816,611.69	344,772,232.42

3

	6,628,000.00	9,707,308.00
	6,628,000.00	9,707,308.00

4

5

	25,621,411.50	
	25,621,411.50	

6

		248,800.00
xcovery	52,027,500.00	
	52,027,500.00	248,800.00

42

1

1	--	--
	367,864,764.40	343,434,939.98
	1,214,069.59	-206,771.83
	10,023,287.88	8,461,699.99

	9,376,933.42	9,400,539.34
	682,425.14	1,499,332.60
“ ”	464,387.59	35,006.06
“ ”	1,941,430.19	776,026.88
“ ”	-4,722,417.50	761,921.96
“ ”	-1,006,558.58	-1,710,673.44
“ ”	112,467.70	400,513.30
“ ”	-27,822,429.44	-13,707,624.88
“ ”	-15,373,096.68	-717,133.99
“ ”	52,790,318.94	38,535,682.75
	11,507,436.27	-1,399,625.66
	407,053,018.92	385,563,833.06
2	--	--
3	--	--
	153,949,621.60	260,105,801.52
	260,105,801.52	197,765,566.03
	-106,156,179.92	62,340,235.49

2

	7,326,109.74
	--
	7,326,109.74
	1,782,353.61

	153,949,621.60	260,105,801.52
	4,803.26	10,093.55
	153,944,818.34	260,095,707.97
	153,949,621.60	260,105,801.52
	0.00	0.00

43

1

	1,844,574.12	6.9370	12,795,810.68
	1,844,574.12	6.9370	12,795,810.68
	7,590,493.15	6.9370	52,655,250.98
	7,590,493.15	6.9370	52,655,250.98

2

1

	7,326,109.74	100.00%		2016 05 05		4,549,885.84	0.00%					

2

1

1

				80.00%	
				51.00%	
				100.00%	
				100.00%	

2

	20.00%	-582,053.12		-1,239,861.13
	49.00%	-349,080.09		5,946,332.09

3

	822,942.77	88,398.48	911,341.25	6,908,413.54		6,908,413.54	219,498.93	103,484.52	322,983.45	3,409,790.13		3,409,790.13
	11,803,212.56	389,675.73	12,192,888.29	59,046.66		59,046.66	12,500,604.77	649,532.17	13,150,136.94	303,886.96		303,886.96

		-2,910,265.61	-2,910,265.61	-2,622,184.19		-2,296,589.58	-2,296,589.58	-3,424,005.81
		-712,408.35	-712,408.35	-1,248,433.60		-2,862,220.89	-2,862,220.89	-4,432,165.91

2

1

X-covey Holding Company LLC				19.38%
Capio Biosciences Inc.				20.17%

20%

20%

X-covey Holding Company LLC

2

	/		/	
	X-covey Holding Company LLC	Capio Biosciences Inc.	X-covey Holding Company LLC	Capio Biosciences Inc.
	18,730,628.39	18,841,948.57	63,229,797.69	
	74,235,181.71		12,007,447.54	
	92,965,810.09	18,841,948.57	75,237,245.23	

	35,839,129.50	19,009.60	20,226,419.01	
	52,027,500.00		0.00	
	87,866,629.50	19,009.60	20,226,419.01	
	0.00		0.00	
	-59,321,165.86	-1,306,847.63	-51,216,166.07	
	0.00		0.00	
	-59,321,165.86	-1,306,847.63	-51,216,166.07	
	0.00	0.00	0.00	

1

2

3

12

1

YINXIANG WANG

FENLAI TAN

2

3

4

SHAOJING HU	
	2011 10 28 ,
Amgen Inc.	Amgen Greater China ,Limited
Beta Pharma, Inc.(
Xcovery Holding Company LLC	19.38%

5

1

/

Amgen Inc.					1,116,870.70
Xcovery Holding Company LLC					1,725,177.11
		2,420,439.00			

2

		24,000.00	24,000.00
YINXIANG WANG		20,000.00	20,000.00

		18,000.00	18,000.00
--	--	-----------	-----------

3

4

		19,130,000.00	15,670,000.00

5

	SHAOJING HU	2014 1 24		2015 10 6	
15086		SHAOJING HU	2014 1 24		2015
10 6	15086		SHAOJING HU	15086	20%
	I	5,000	SHAOJING HU		
1,000	2015		2015		
2016 8	15086 I				
		50% 500		-	
		2016 11	50% 500	SHAOJING HU	
	SHAOJING HU				
	500	()			

6

1

	Xcovery Holding Company LLC	52,655,250.98	1,040,550.00		

2

	Beta Pharma, Inc.(25,621,411.50	
	Xcovery Holding Company		1,725,177.11

	LLC		
--	-----	--	--

1

2

3

4

5

()

		1,727,524.80

()

		8,637,624.00
		1,727,524.80

1

2

1

1

1

	38,154,203.68	100.00%	34,081.81	0.09%	38,120,121.87	27,453,356.87	100.00%	12,521.45	0.05%	27,440,835.42
	38,154,203.68	100.00%	34,081.81	0.09%	38,120,121.87	27,453,356.87	100.00%	12,521.45	0.05%	27,440,835.42

1						
90	90		38,038,963.98			
90	-1	1				
1			38,038,963.98			
1	2		2,450.50	245.05		10.00%
2	3		112,789.20	33,836.76		30.00%
			38,154,203.68	34,081.81		0.09%

2

21,560.36

0.00

3

4

		(%)
	9,633,141.40	25.25
	9,087,926.90	23.82

	5,921,861.40	15.52	
	5,135,332.80	13.46	
	4,143,133.80	10.86	
	33,921,396.30	88.91	

5

6

2

1

	155,529,093.51	100.00%	48,562.20	0.03%	155,480,531.31	45,113,849.36	100.00%	39,942.97	0.09%	45,073,906.39
	155,529,093.51	100.00%	48,562.20	0.03%	155,480,531.31	45,113,849.36	100.00%	39,942.97	0.09%	45,073,906.39

1					
90	90	155,014,409.00			
90	-1 1	292,125.15		14,606.26	5.00%
1		155,306,534.15		14,606.26	0.01%
1 2		209,559.36		20,955.94	10.00%
3		13,000.00		13,000.00	100.00%
		155,529,093.51		48,562.20	0.03%

2

8,619.23

0.00

3

4

	394,084.51	329,559.36
	32,000.00	25,800.00
	204,409.00	158,490.00
	154,760,000.00	44,600,000.00
	138,600.00	
	155,529,093.51	45,113,849.36

5

		149,100,000.00	90	95.87%	
		5,660,000.00	90	3.64%	
		163,359.36	1-2	0.11%	16,335.94
		138,600.00	90 -1	0.09%	6,930.00
		50,000.00	90 -1	0.03%	2,500.00
	--	155,111,959.36	--	99.74%	25,765.94

6

7

8

3

	242,933,250.00		242,933,250.00	202,099,900.00		202,099,900.00
	16,014,819.59		16,014,819.59			
	258,948,069.59		258,948,069.59	202,099,900.00		202,099,900.00

1

	2,400,000.00			2,400,000.00		
	9,378,900.00			9,378,900.00		
	50,000,000.00			50,000,000.00		
	130,321,000.00	50,833,350.00		181,154,350.00		
	10,000,000.00		10,000,000.00			
	202,099,900.00	50,833,350.00	10,000,000.00	242,933,250.00		

2

Capio Biosciences Inc.	16,250,640.00		-235,820.41								16,014,819.59	
	16,250,640.00		-235,820.41								16,014,819.59	
	16,250,640.00		-235,820.41								16,014,819.59	

4

	1,034,831,960.01	32,829,272.62	914,594,433.40	27,943,123.89
	228,939.75		69,440.00	
	1,035,060,899.76	32,829,272.62	914,663,873.40	27,943,123.89

5

	-235,820.41	
	5,626,109.74	-1,000.63
	11,472,095.39	3,772,634.58
	16,862,384.72	3,771,633.95

1

	4,085,498.25	
	2,197,732.83	
	59,044,942.45	
	11,904,794.03	
	-2,009,458.24	
	11,379,700.64	
	1,158.19	
	63,842,650.49	--

2

		/	/
	32.88%	1.01	1.01
	27.19%	0.84	0.84

第十二节 备查文件目录

- 1、载有公司法定代表人、财务负责人、会计机构负责人签名并盖章的财务报表；
- 2、载有会计师事务所盖章、注册会计师签名并盖章的审计报告原件；
- 3、载有法定代表人签名的公司2016年度报告文本；
- 4、报告期内在中国证监会指定信息披露载体上公开披露过的所有公司文件的正本及公告的原稿；
- 5、其他备查文件；
- 6、以上文件的备置地点：公司证券部。

贝达药业股份有限公司

法定代表人：



2017年3月31日

2 ———
10

2016
2016

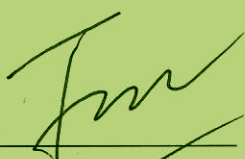
2016

2016

2016

(本页无正文,为贝达药业股份有限公司董事、高级管理人员关于《2016年年度报告全文及摘要》的书面确认意见之签字页)

董事签名:



丁列明



YINXIANG WANG



YI SHI

(本页无正文，为见证章)